

Essentials for Photoshop Elements

The Perfect Companion to Adobe Photoshop Elements

Make it Better, Cut it out, Frame it, Enlarge It! Essentials for Photoshop Elements is the must-have companion for Adobe Photoshop Elements. You'll spend less time behind the computer and more time enjoying taking pictures.

Before



After

Features

Optimizing your images is a snap with Essentials, your one click solution to proper color, brightness, contrast and sharpness

Cut people out of one picture, even tough stuff like hair, so you can easily put them in new pictures

Add the finishing touch to your images with the Frame It module, a collection of over 500 edge and border effects right out of the darkroom

Resize images up to 4x with no loss of quality or detail

Easy to use tools with in-depth video tutorials take the pain out of learning

NEW! COMING SOON - Fix Four Problems with one Box!

Essentials for Photoshop Elements is a collection of four tools to help you correct color, remove unwanted backgrounds, add creative borders and resize your photos to get a larger print. You'll spend less time behind the computer and more time behind the camera! Plus with its built-in tutorials and easy to use palette you'll be up and running in no time.

Please Note: Elements for Photoshop Elements is on backorder, so orders placed today for will ship on or about April 15th, 2007.

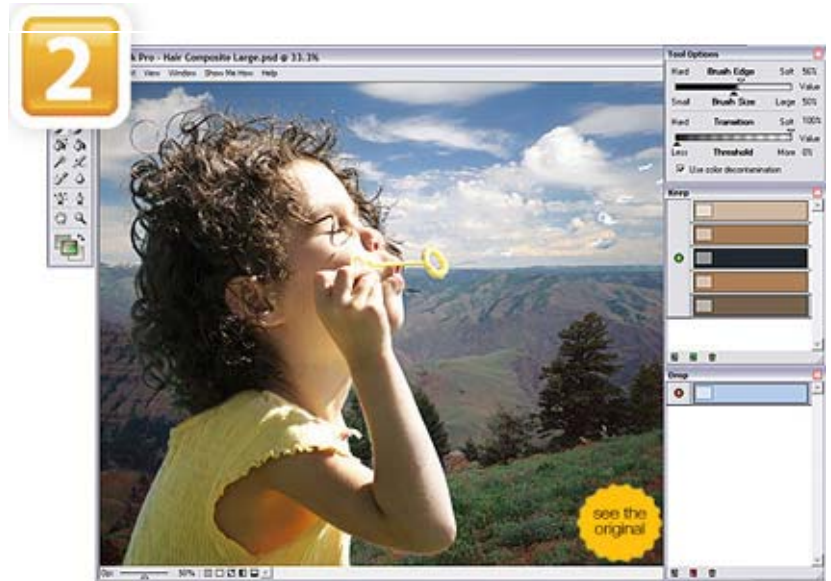
NEW! Make it Better...



This tool combines six Photoshop image adjustment dialogs into a single interface. This lets you make your images better without the need to understand the complex image controls of Photoshop Elements. Rather than cryptic sliders like thresholds and radius you just pick from simple pull-down menus to intelligently adjust contrast, brightness, saturation, color correction, sharpness and noise reduction. Or just use the amazing Quick Enhance, which automatically enhances your image in one click. The Make it Better tool also gives you several ways to view and compare your results with multiple split-screen views.

NEW! Cut it Out...

Essentials for Photoshop Elements features the Cut it Out tool for cutting a subject out of a background. How often have you wanted to take a person out of one picture and put them in to another but have been stopped difficult areas like hair or glasses in your subject? The Cut it Out tool makes it easy to paint away an unwanted background leaving your subject to be placed onto a new background. It maintains all of the small details such as hair, smoke, glass and netting. With its unique color decontamination technology the Cut it Out tool can even paint away unwanted colors through semi-transparent subjects to they blend naturally with a new background. And unlike the Extract tool in Photoshop Elements you can see your results in real-time and fix your progress at anytime with any of the tools available in the Cut it Out tool.



NEW! Frame It...



The Frame It tool really puts you into the digital darkroom. Now it is easy to add realistic film and darkroom edge and border effects to your images. But why stop at the darkroom, you can add artistic edges like torn paper, brush strokes or even realistic frames and mats you would hang on the walls. You can even stack multiple edges and frames to create your own unique look. It comes packed with over 500 edges and frames too choose from. Use the built-in browser to browse or search for your favorites. The creative possibilities are limitless with the Frame It tool.

NEW! Enlarge It!

Finally, Essentials for Photoshop Elements includes the Enlarge It tool which can increase image size without the loss of sharpness and detail that you would normally expect. It can resize your images up to 4x and still maintain sharp edges and minute details. That's like taking a 4x6 print and making it as big as a poster. It is a must for any photo enthusiast who makes big prints or needs to crop a section out of an image to get just the right composition. the Enlarge It tool is also great for printing images from camera phones and even digital video camera still frames.



System Requirements

Windows XP & Vista

Plug-in version: 1.0

Adobe Photoshop Elements 4.0, 5.0 and higher Windows XP with Service Pack 2 or Windows Vista

Mac OS X

Plug-in version: 1.0

Mac OS X 10.4, 10.5 or higher Adobe Photoshop Elements 3.0, 4.0 and higher

Common

700 MB of available hard disk space 512MB RAM Internet connection and Flash player 8 or higher for tutorials 1 GHz or faster processor(s) 1024x768 or higher Display



Essentials for Photoshop Elements

Order Direct from onOne

Call 1-888-968-1468